

PARCEL MAP NO. 10010

IN THE CITY OF ONTARIO

BEING A SUBDIVISION OF A PORTION OF LOT 3, BLOCK 23, TRACT NO. 2244 AS PER MAP FILED IN BOOK 35, PAGES 50 THROUGH 56 INCLUSIVE, OF MAPS, RECORDS OF SAN BERNARDINO COUNTY, CALIFORNIA.

ENGINEER'S NOTES:

BASIS OF BEARINGS:

The bearing of N89°58'07"W on the centerline of Interstate 10 as shown on State Department of Transportation Monumentation Map No. 421052, on file in the office of the San Bernardino County Surveyor.

L.D. KING, INC.

SEPTEMBER, 1986

DOUGLAS H. MAYS, R.C.E. 21062

- ▲ - Indicates found 2" I.P., Tagged "L.S. 2505", no reference.
- - Indicates found 1" I.P., Tagged "R.C.E. 21062", per P.M. 7727, P.M.B. 111/34-35 unless otherwise noted.
- - Indicates Set 1" I.P., Tagged "R.C.E. 21062."

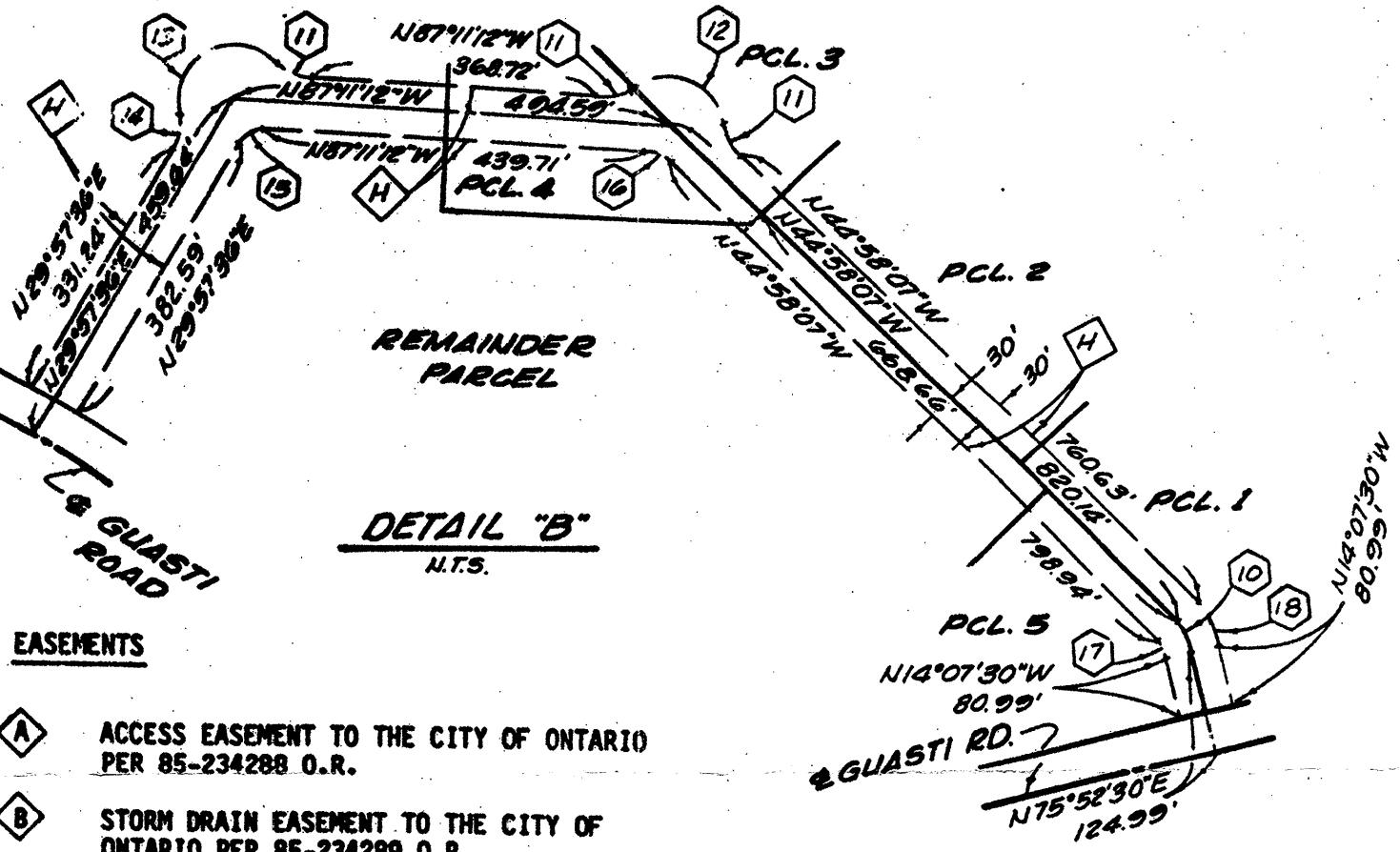
C.S.F.B. - Indicates County Surveyor's Field Book.

~~~~~ - Indicates access relinquishment per Doc. 1881/477 O.R.

( ) - Indicates record data per TR. 2244, M.B. 35/53.

[ ] - Indicates record data per R.S. 37/70.

< > - Indicates record and measured per P.M. 5830, P.M.B. 57/52-53



**EASEMENTS**

▲ ACCESS EASEMENT TO THE CITY OF ONTARIO PER 85-234288 O.R.

● STORM DRAIN EASEMENT TO THE CITY OF ONTARIO PER 85-234289 O.R.

○ ROAD AND PUBLIC UTILITY EASEMENT TO THE CITY OF ONTARIO PER INST. NO. 85-234290, O.R.

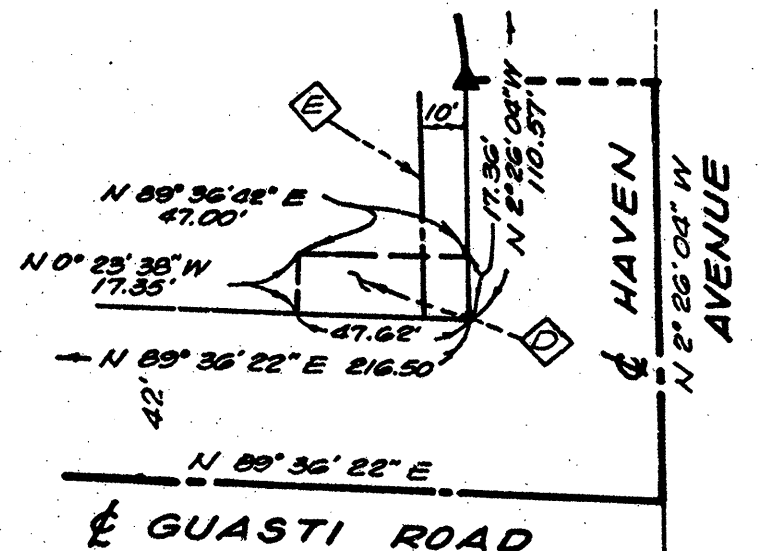
◇ TEMPORARY CONSTRUCTION EASEMENT TO THE CITY OF ONTARIO PER INST. NO. 85-234291, O.R.

◇ 20' WIDE STORM DRAIN EASEMENT TO THE CITY OF ONTARIO PER P.M. 7727, P.M.B. 111/34-35.

◇ 15' WIDE STORM DRAIN EASEMENT TO THE CITY OF ONTARIO PER P.M. 7727, P.M.B. 111/34-35.

◇ SLOPE EASEMENT TO THE CITY OF ONTARIO PER INST. NO. 86-353820 O.R.

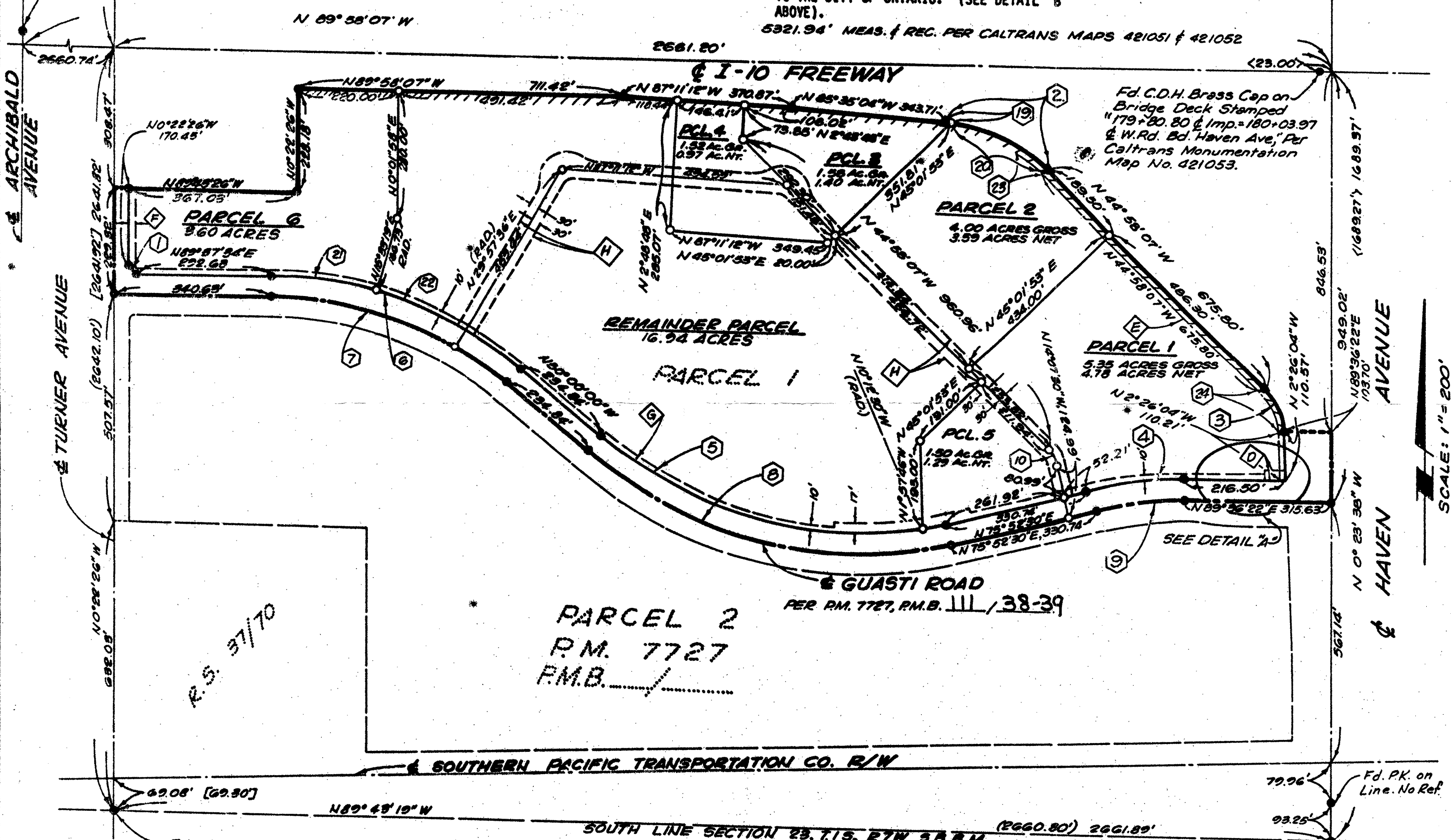
◇ PRIVATE RECIPROCAL INGRESS/EGRESS EASEMENT; AND ACCESS EASEMENT FOR PUBLIC SERVICES AND PUBLIC UTILITY EASEMENT HEREBY DEDICATED TO THE CITY OF ONTARIO. (SEE DETAIL "B" ABOVE).



|     | △          | R       | L       | T       |
|-----|------------|---------|---------|---------|
| 1.  | 90°00'00"  | 15.00'  | 23.56'  | 15.00'  |
| 2.  | 40°36'57"  | 350.00' | 248.11' | 129.52' |
| 3.  | 42°32'03"  | 138.00' | 102.45' | 53.71'  |
| 4.  | 13°43'52"  | 911.98' | 218.56' | 109.81' |
| 5.  | 54°07'30"  | 856.00' | 808.63' | 437.33' |
| 6.  | 40°22'26"  | 844.00' | 594.73' | 310.31' |
| 7.  | 40°22'26"  | 800.00' | 563.73' | 294.14' |
| 8.  | 54°07'30"  | 900.00' | 850.19' | 459.81' |
| 9.  | 13°43'52"  | 800.00' | 191.72' | 96.32'  |
| 10. | 30°50'37"  | 50.00'  | 26.92'  | 13.79'  |
| 11. | 23°33'23"  | 50.00'  | 20.56'  | 10.43'  |
| 12. | 89°19'52"  | 70.00'  | 109.14' | 69.19'  |
| 13. | 119°58'02" | 70.00'  | 146.57' | 121.16' |
| 14. | 33°33'26"  | 50.00'  | 29.28'  | 15.00'  |
| 15. | 62°51'12"  | 25.00'  | 27.42'  | 15.28'  |
| 16. | 42°13'05"  | 25.00'  | 18.42'  | 9.65'   |
| 17. | 30°50'37"  | 20.00'  | 10.77'  | 5.52'   |
| 18. | 30°50'37"  | 80.00'  | 43.07'  | 22.07'  |
| 19. | 0°32'13"   | 350.00' | 3.28'   | 1.64'   |
| 20. | 40°04'44"  | 350.00' | 244.83' | 127.66' |
| 21. | 15°55'45"  | 844.00' | 234.65' | 118.08' |
| 22. | 24°26'41"  | 844.00' | 360.08' | 182.82' |
| 23. | 13°26'46"  | 340.00' | 79.79'  | 40.03'  |
| 24. | 42°32'03"  | 128.00' | 95.03'  | 49.82'  |

▲ "G" STREET  
Fd. S.B. Co. Surv. 1" I.P. & Tag, Flush, Acc. as & Int.

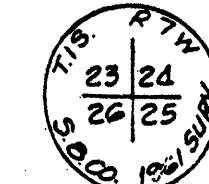
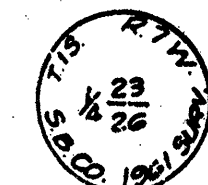
Fd. C.D.H. Brass Cap on Bridge Deck Stamped 377+68.54 P.O.T. & Imp. = 20' ± 28.00 P.O.T. & Arch. Per C.S. 7671/2.



PARCEL 2  
P.M. 7727  
P.M.B. 111/38-39

Fd. 2" Brass Disk, Down 0.25', Marked as Shown Per C.S.F.B. 392/20

Fd. 2" Brass Disk, Down 1.0', Marked as Shown Per C.S.F.B. 317/72



SCALE: 1" = 200'