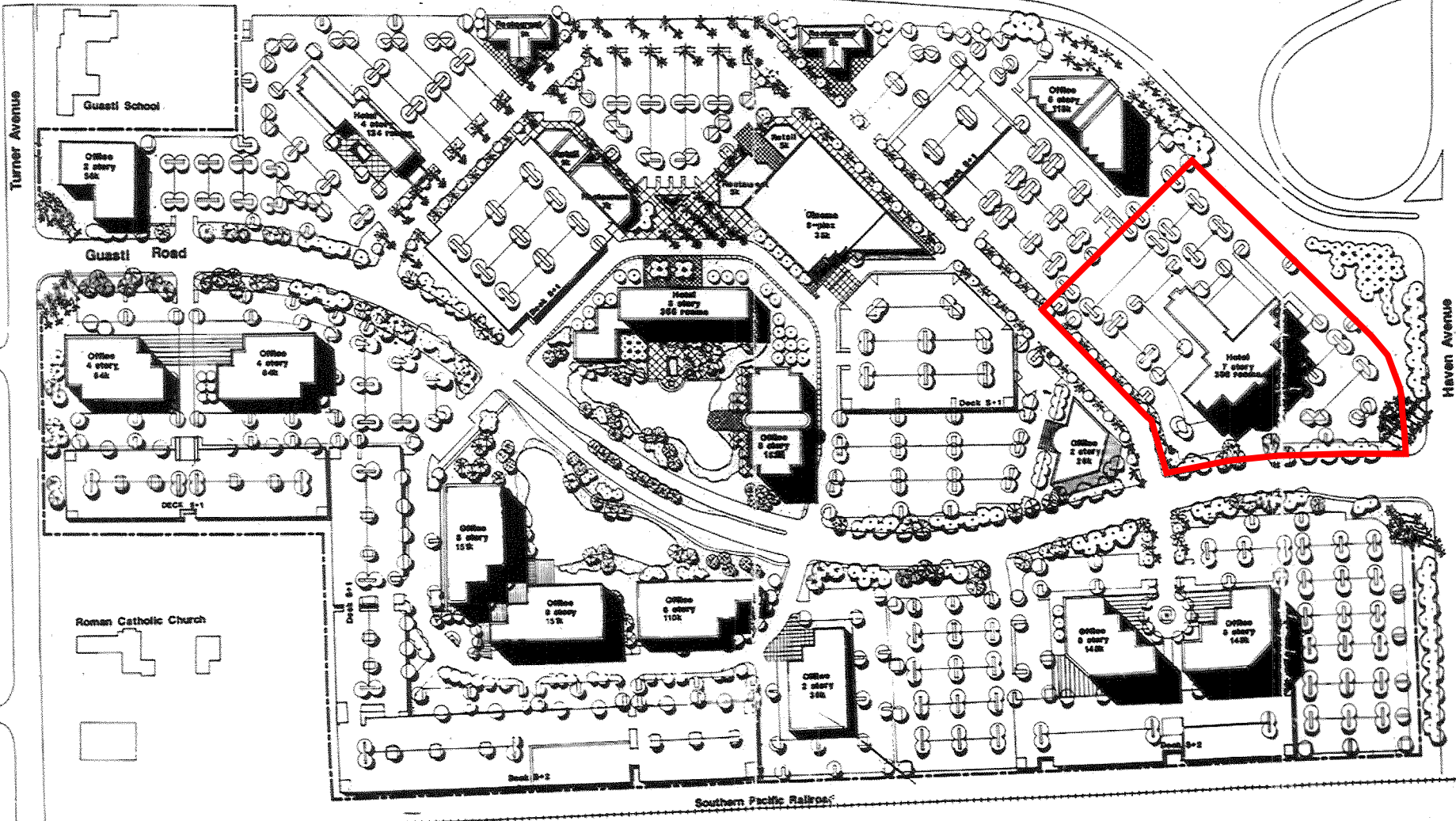


San Bernardino Freeway

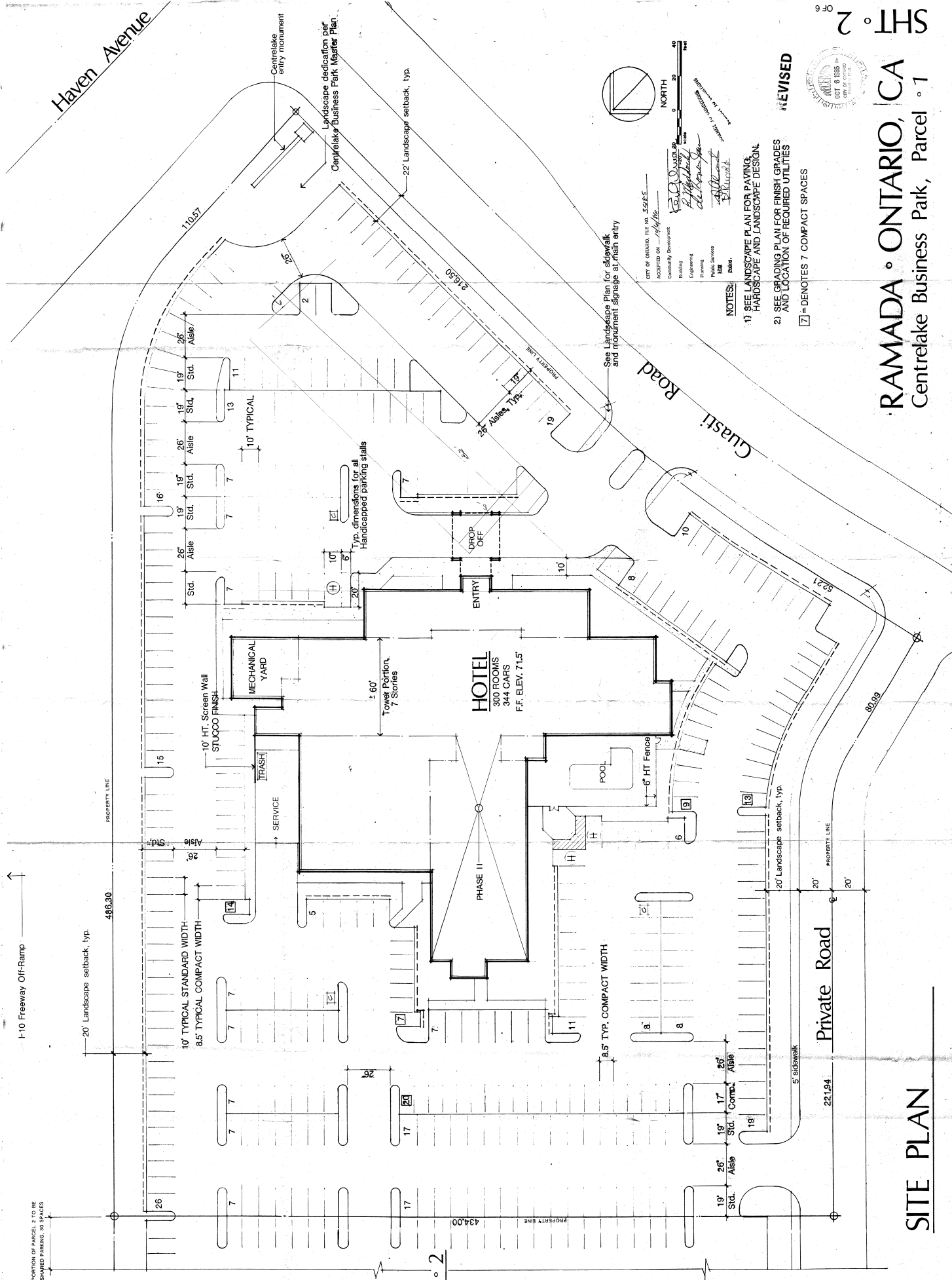


Total Hotel Rooms: 800
 Total Building Square Footage: 1,300,000 S.F.

CONCEPTUAL SITE PLAN - EXHIBIT 4

APRIL 1982

LANGDON · WILSON · MUMPER
 ARCHITECTS



REVISED



RAMADA ° ONTARIO, CA
 Centrelake Business Park, Parcel ° 1

- NOTES:
- 1) SEE LANDSCAPE PLAN FOR PAVING, HARDSCAPE AND LANDSCAPE DESIGN.
 - 2) SEE GRADING PLAN FOR FINISH GRADES AND LOCATION OF REQUIRED UTILITIES.
- [7] = DENOTES 7 COMPACT SPACES

CITY OF ONTARIO, FILE NO. 25165
 ACCEPTED ON 10/14/99
 Community Development
 Building
 Engineering
 Planning
 Public Services
 Title
 Date:

See Landscape Plan for sidewalk and monument signage at main entry

PARCEL ° 2
 NOT A PART

SITE PLAN