

THIS MAP WAS PREPARED FOR ASSESSMENT PURPOSES ONLY. NO LIABILITY IS ASSUMED FOR THE ACCURACY OF THE DATA SHOWN. ASSESSOR'S PARCEL MAY NOT COMPLY WITH LOCAL LOT-SPLIT OR BUILDING SITE ORDINANCES.

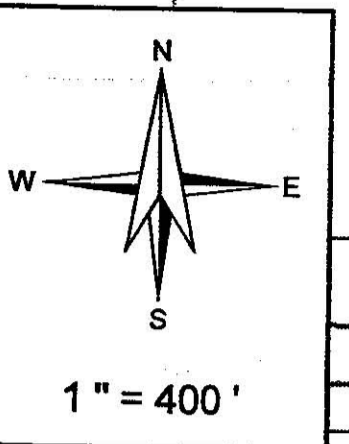
AUG 22 2012

POR. N SEC. 18, T.4S., R.6E.

T.R.A. 061-054
061-154
061-219

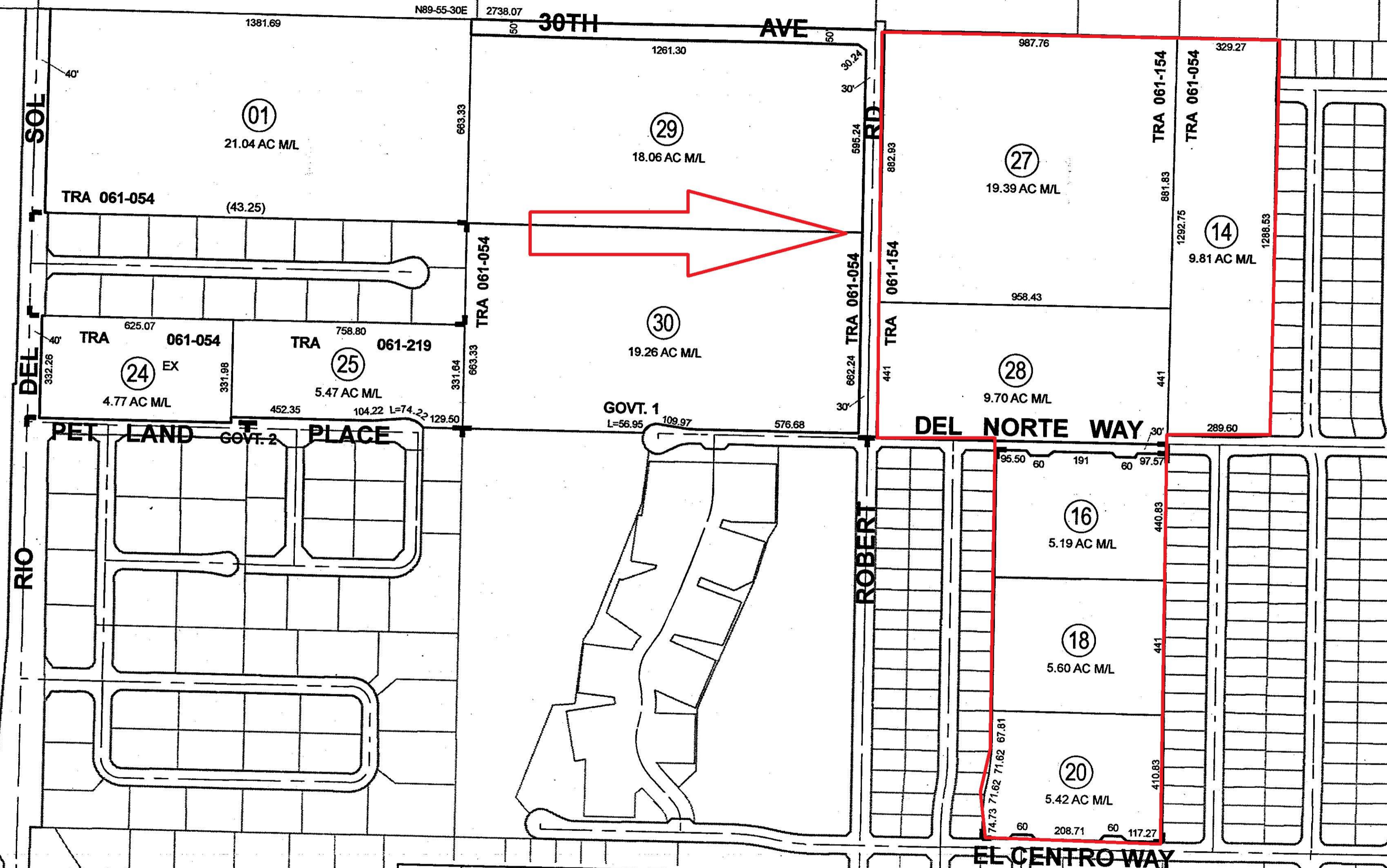
650-02

24-70-7



Legend

- Lot Lines
- Right-Of-Way
- - - Old Lot Lines
- - - Reference R.O.W
- Other Easements
- Lease Area
- Subdivision Tic Mark



Data *	
G.L.O.	
RS 7/1, 14/46, 36/68	
MB 24/34, 35/97	
RS 84/88	

Bk 670 Pg 10	Bk 648 Pg 15
Bk 670 Pg 24	Pg 38 Pg 02 Pg 03
	Pg 35 Pg 39 Pg 37 Pg 05
	Pg 34 Pg 12

Date	Old Number	New Number
7/1/1986	13	15,ST
9/1/2001	5	PG.35-36
4/1/2003	11	16,17
4/1/2003	12	18,19
4/1/2003	15	20,21
4/1/2003	17,19,21	22
4/1/2003	22	PG.37
7/8/2004	4	PG.35
3/4/2005	3	23,24
4/13/2006	2	PG.38
10/7/2009	23	25,ST
8/9/2011	8	PG.39
9/26/2011	7	26, ST
9/26/2011	9	27, ST
9/29/2011	10	28, ST
8/14/2012	6	29,ST
8/14/2012	26	30,ST



ASSESSOR'S MAP BK650 PG.02
Riverside County, Calif.

Hernandez

Aug 2012