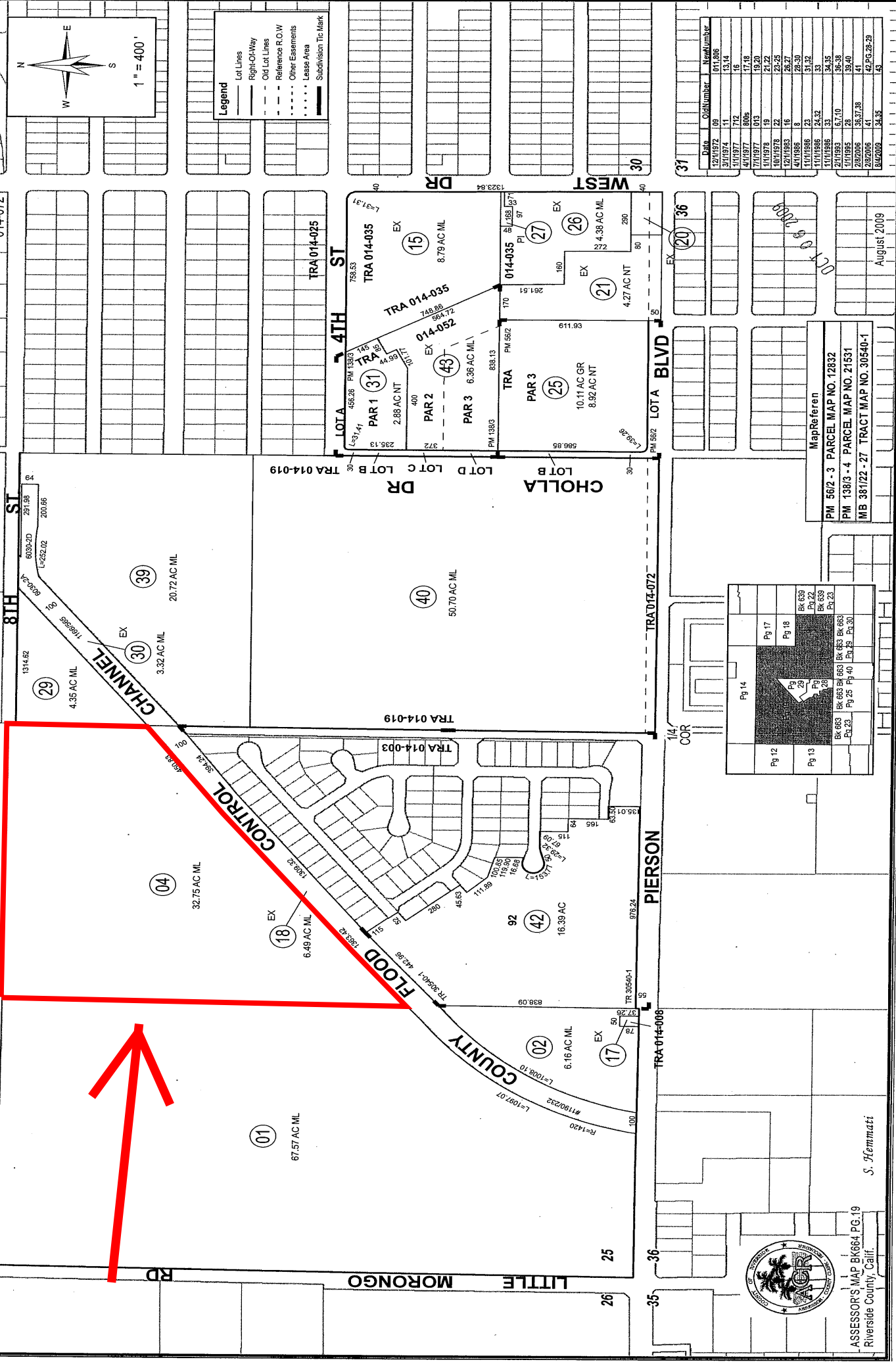


THIS MAP WAS PREPARED FOR ASSESSMENT PURPOSES ONLY. NO LIABILITY IS ASSUMED FOR THE ACCURACY OF THE DATA SHOWN. ASSESSOR'S PARCEL MAY NOT COMPLY WITH LOCAL LOT-SPLIT OR BUILDING SITE ORDINANCES.

AUG 18 2009

SEC. 25, T. 2S., R. 4E.  
CITY OF DESERT HOT SPRINGS

25



Pg 12	Pg 13	Pg 14	Pg 17	Pg 18
BK 683	BK 683	BK 683	BK 639	BK 639
Pg 23	Pg 25	Pg 40	Pg 22	Pg 23

Map Referen  
 PM 56/2 - 3 PARCEL MAP NO. 12832  
 PM 138/3 - 4 PARCEL MAP NO. 21531  
 MB 38/122 - 27 TRACT MAP NO. 30540-1

Date	Old Number	New Number
3/27/97	09	011,806
3/11/97	11	13,14
3/11/97	16	17,18
4/11/97	8005	19,20
7/11/97	013	21,22
11/11/97	19	23,25
10/11/97	22	26,27
12/11/97	16	28,29
11/11/97	5	30,31
11/11/97	24	32,33
11/11/97	53	34,35
2/11/98	67,70	36,38
11/11/98	28	39,40
2/8/2006	35,37,38	41
2/8/2006	41	42,PG-28,29
8/4/2009	34,35	43



ASSESSOR'S MAP BX664 PG.19  
Riverside County, Calif.  
S. Hemmati